

Make their day special



It costs £1.6 million every year to run the hospice. As a local independent charity we receive less than 10 per cent of our funding from statutory sources.

We support people with illnesses such as cancer, respiratory disease, degenerative heart problems and Parkinson's Disease.



Patients benefit from a variety of services including day therapy, counselling and specialist therapies. We pride ourselves with looking after the whole person, not just the illness.

Cotswold Care provides Hospice at Home nurses and health staff who support people who wish to die in their own homes.

We believe that every life should be celebrated and every person treated with dignity and respect.

Why leave a donation to Cotswold Care Hospice?

One in three people will get cancer. One person in seven in the UK is affected by lung disease. Around 2.5 million people in the UK are living with heart disease.

Without charities such as Cotswold Care Hospice, there would be fewer places for people to turn to for emotional support and physical care - and not have to worry about the costs.

Legacies play a vital role in funding the cost of our services.

This means we can care for more people and their families and carers, from the moment they are diagnosed.

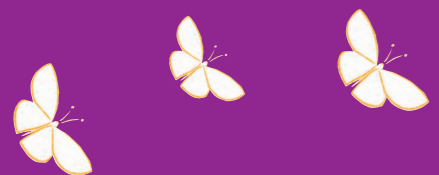
We can be there for years to come, throughout their illness, when they need us most.



“ I thought a hospice was a place where you go to die but Cotswold Care Hospice has helped me to live. As soon as I walked through the door I realised that it was a place not to be frightened of.”

Linda, Hospice patient

every day is special





Would you like the next generation to have care when they need it most?

Wouldn't it be good to know that the next generation always had a place to turn to when struggling with a life-limiting illness?

Somewhere that provided free support for the person who was ill and their loved ones.

Every year, Cotswold Care Hospice touches the lives of more than 400 people with cancer and other life-limiting illnesses and their families. All of our services are provided free of charge.

We want to provide that care for the next generation. But we can't do it without you.

Every legacy, big or small, will help us move closer to realising our dream.

“ I came to Cotswold Care Hospice because I wanted a different kind of life. Thanks to the people at Cotswold Care Hospice I know there is life after cancer. ”

Joe, Hospice patient

What are you giving my generation?



Your lasting tribute



If you have already decided to leave a legacy to Cotswold Care Hospice in your will and you feel you would like to let us know, please return this form to us. It is always helpful to know about any future gifts.

Thank you so much.

- I have already included Cotswold Care Hospice in my Will.
- I would like more information about Cotswold Care Hospice.

Title Name

Address.....

Town..... Postcode.....

Email

Please send your completed form to Mrs K Morton, Cotswold Care Hospice, Freepost SWC 2421, Burleigh Lane, Minchinhampton, Glos. GL5 2PQ

Your details will be stored at Cotswold Care Hospice but not shared with any third parties. If you do not wish to receive further communications from Cotswold Care Hospice, please tick this box

